

## Capability Statement SBA Certified 8(a), WOSB, CA DBE Certified Firm

### About Us

Atwood Hay Inc. is a General, Electrical and Painting Contractor. We specialize in Military, Federal, and State Public Works. We perform at all levels from being the Prime Contractor, a Subcontractor and also provide Industry Consulting Services.

### Core Competencies

**Safety:** All Management is 30 Hour OSHA certified.

**Value Engineering:** Atwood Hay Inc. listens to the customer's construction concepts and works to provide the best value.

**Pride:** At Atwood Hay, we take genuine responsibility and pride in every aspect of a project.

**Relationships:** From the date of Award, Atwood Hay works to build trust and respect with the customer. Coordination and Collaboration are keys to the success of a project.



### Differentiators

- ◆ **"3 Outstanding CPARS Ratings"** Commitment to customer service and dedication to completing projects on time, within budget, and no lost time accidents.

W9128A-09-C-0010

W9128A-13-C-0005

W9128A-14-C-0023

- ◆ **Awarded 5-year Electrical Multiple Award Construction Contract (E-MACC) at Beale AFB, CA 2019**
- ◆ **Awarded 5-year Foam Fire Suppression Inspection Contract, Beale AFB, CA 2017**

### Past Performance

#### Building the Future. Restoring the Past.

Electrical Distribution Systems, Substations, Lighting, Communications. Infrastructure and Utilities. Water & Sewer upgrades. Tenant remodels.

Restoration of Historical Places. Demolition. Abatement of Hazardous Materials.

**Replace Transformer and Relocate Electrical Equipment.**  
Monterey Navy Support Academy (NSAM)

**SANDAG Mid Coast Corridor Transit Project, San Diego, CA**  
High Rail Installation of 477 Steel Catenary Poles.

**Battery Townsley, Marin Headlands/Fort Cronkhite.**  
Demolition, Abatement and Restoration in 1930's bunkers.

**Aircraft Parking Apron, Beale AFB.** New 60' Stadium Lights.

**Interior & Exterior Shelter Lighting, Beale AFB.** Replace 6 aircraft hangar's lighting with LED fixtures.

**Fort Point Historical Park, Golden Gate National Historic Site.** Restoration of historic guardrails.

**Storm Water, Box Culvert Installation, Beale AFB.**

**USACE, Vandenberg AFB, CA,** Replace C-1 Feeder





**ATWOOD HAY INC.**  
CONSTRUCTION

PO Box 9196, Beale AFB, CA 95903

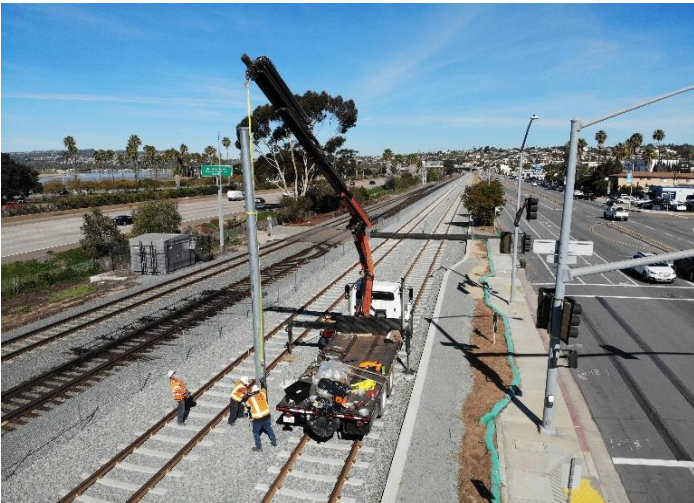
P:530.788.7700 P: 916.257.2747

C-10, C-33, B License

**Building the Future. Restoring the Past.**

**NAICS CODES**

- 236220 Commercial and Institutional Building Construction
- 236210 Industrial Building Construction
- 237130 Power and Communication Line and Related Structures Construction
- 237110 Water and Sewer Line and Related Structures Construction
- 237990 Other Heavy and Civil Engineering Construction
- 238210 Electrical Contractors and Other Wiring
- 238220 Plumbing, Heating, and Air Conditioning Contractors
- 238990 All Other Specialty Trade Contractors



**“Women belong in all places where decisions are being made. ... It shouldn't be that women are the exception.”**

**-Ruth Bader Ginsburg**



US Army Corps of Engineers  
BUILDING STRONG.



U.S. AIR FORCE



BUREAU OF RECLAMATION



MID-COAST CORRIDOR  
TRANSIT PROJECT