

Capability Statement SBA Certified 8(a), WOSB, CA DBE Certified Firm

About Us

Atwood Hay Inc. is a General and Electrical Contractor specializing in Electrical Distribution System, Substation Repairs with our focus has been military and public works utility infrastructure. We perform at all levels from being the Prime Contractor, Subcontractor and provide Industry Consulting Services.

Core Competencies

Safety: All Management is 30 Hour OSHA certified. We examine each project to identify potential hazards to ensure the safety of the construction workers and everyone on the site from getting injured.

Value Engineering: Atwood Hay Inc. listens to the customer's construction concepts and works to provide the best value. At Beale AFB Substation project, this meant keeping a building intended for demolition as the new substation location. This deleted the demolition cost, environmental impact and the indoor location for the life of the investment.

Pride: At Atwood Hay, its not just about getting a good evaluation and moving on to the next project. We feel genuine responsibility and pride in every aspect of a project.

Relationships: From the date of Award, Atwood Hay works to build trust and respect with the customer. Coordination and Collaboration are keys to the success of a project. Keeping a facility open and operations during construction can be a challenge and we strive to accommodate the needs of the facility and occupants.

Differentiators

- ◆ **"3 Outstanding CPARS Ratings"** Commitment to customer service and dedication to completing projects on time, within budget, and no lost time accidents.

W9128A-09-C-0010

W9128A-13-C-0005

W9128A-14-C-0023

- ◆ 25+ years of collective government experience
- ◆ Awarded 5-year Electrical Multiple Award Construction Contract (E-MACC) at Beale AFB, CA 2019
- ◆ Awarded 5-year Foam Fire Suppression Inspection Contract, Beale AFB, CA 2017

Past Performance

In addition to Substations and Electrical Distribution Systems, Atwood Hay Inc. has completed a variety of Industrial Commercial Construction projects from tenant remodels, building administrative space in aircraft hangars, to water and sewer infrastructure repairs and expansions.

SANDAG Mid Coast Corridor Transit Project, San Diego, CA
High Rail Installation Catenary Poles, \$2,4 Mil

USACE, Schofield Barracks, Oahu, Hawaii, Replaced circuit breakers, transformers, switches, and associated components & controls. \$7.9 Mil

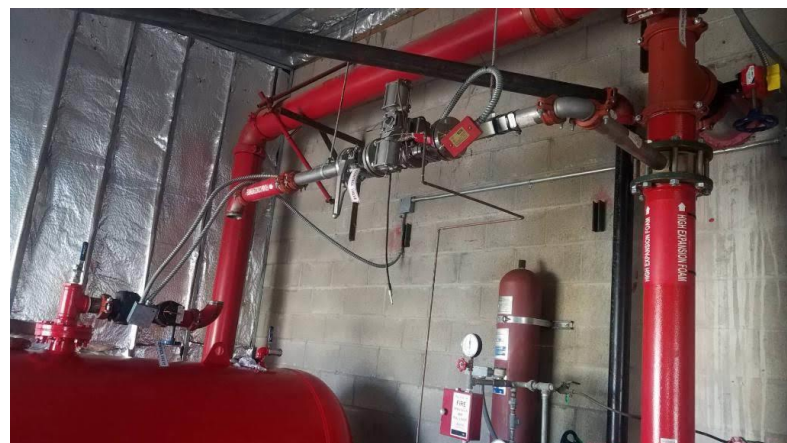
USAF, Beale AFB, CA, Design/Build new substation with back up emergency generator \$1.9 Mil

USACE, Hickam AFB, Oahu, Hawaii, Upgrade Electrical distribution System, Phase 6 \$7.6 Mil

USACE, Joint Base Pearl Harbor-Hickam AFB, Oahu Hawaii, Phase One Smart Power Infrastructure for Energy Reliability and Security \$1.5 Mil

US Army, Combat Training Center US Army Fort, Irwin, CA, Instrument Systems Modernization National Training Center \$14 Mil

USACE, Vandenberg AFB, CA, Replace C-1 Feeder \$4.1 Mil





ATWOOD HAY INC.
CONSTRUCTION

PO Box 9196, Beale AFB, CA 95903

P:530.788.7700 P: 916.257.2747

C-10, C-33, B License

NAICS CODES

- 236220 Commercial and Institutional Building Construction
- 236210 Industrial Building Construction
- 237130 Power and Communication Line and Related Structures Construction
- 237110 Water and Sewer Line and Related Structures Construction
- 237990 Other Heavy and Civil Engineering Construction
- 238210 Electrical Contractors and Other Wiring
- 238220 Plumbing, Heating, and Air Conditioning Contractors
- 238990 All Other Specialty Trade Contractors



US Army Corps of Engineers
BUILDING STRONG.



U.S. AIR FORCE



BUREAU OF
RECLAMATION



MID-COAST CORRIDOR
TRANSIT PROJECT